

Installing the SCU-19 PC Connection Cable driver software on a computer makes possible data transmission and updating the transceiver firmware.

Please read this entire manual carefully. If you agree to the content of this manual, download and install the SCU-19 PC Connection Cable driver.

## **Operating Environment**

---

### Supported Operating Systems

- Microsoft® Windows® 8
- Microsoft® Windows® 7 (Service Pack 1 or later)
- Microsoft® Windows Vista® (Service Pack 2 or later)
- Microsoft® Windows® XP (Service Pack 3 or later)

## **Installing the SCU-19 Driver**

---

**Caution:** Do not connect the transceiver to the computer via the SCU-19 PC Connection Cable until the driver installation process has been completed. Connecting the SCU-19 to the computer before installation has been completed may result in the wrong driver being installed, preventing proper operation.

Install the driver, which matches to the operating system in use.

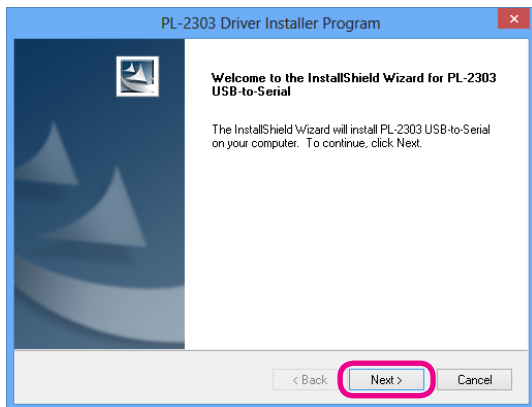
Windows® 8 .....	2
Windows® 7 .....	4
Windows Vista® .....	6
Windows® XP .....	8

# DRIVER INSTALLATION (FOR WINDOWS® 8)

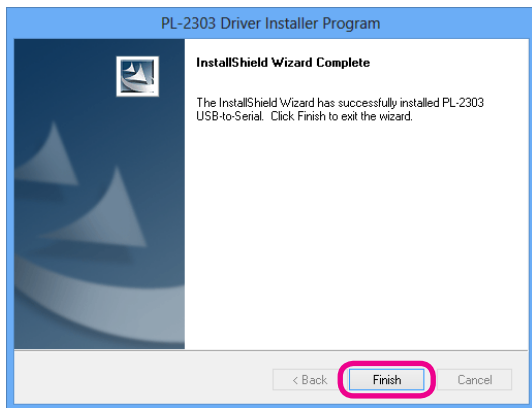
Before installing the driver, make sure that the SCU-19 PC Connection Cable is disconnected from the computer.

## Installation

1. Start up the computer as an “Administrator” user.
2. Double check and ensure the SCU-19 PC Connection Cable is *not connected* to the computer.
3. Unzip the downloaded (SCU-19\_PC\_Connection\_Cable\_Driver.zip) file.
4. Double click the left mouse button on [PL2303\_Prolific\_DriverInstaller\_v1.8.0.exe].
5. When the [User Account Control] dialog box opens, click the left mouse button on [Yes].
6. The dialog box, which is shown below, will open. Click the left mouse button on [Next], to initiate the installation of the driver.
8. Connect the SCU-19 PC Connection Cable to the USB jack on the computer. The SCU-19 PC Connection Cable will be recognized automatically.

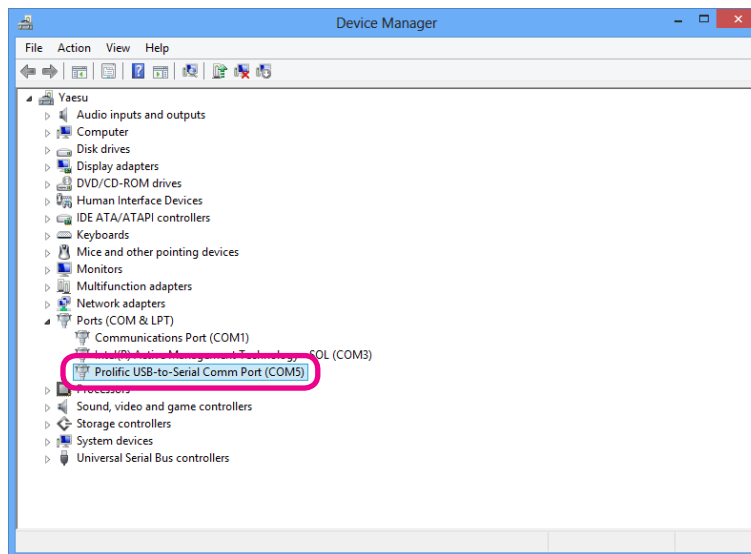
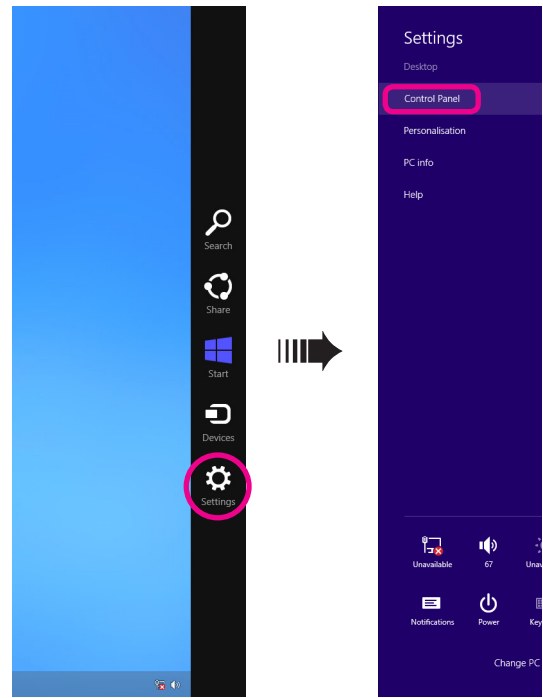


7. When the installation is finished, the dialog box shown below will open. Click the left mouse button on [Finish], to complete the installation of the driver.



## Confirmation

1. Move the mouse cursor to the top right of the screen.
2. Click the left mouse button on [Settings] on the charm bar.
3. Click the left mouse button on the [Control Panel].
4. Click the left mouse button on [System & Security], then click the left mouse button on [Device Manager].
5. When the [User Account Control] dialog box opens, click the left mouse button on [Yes].
6. Open the [Device Manager] dialog box, then double click the left mouse button on [Ports (COM&LPT)].
7. When the “Prolific USB-to-Serial Comm Port (COM X)” (X: Comm Port Number) is displayed, the SCU-19 PC Connection Cable is functioning normally.

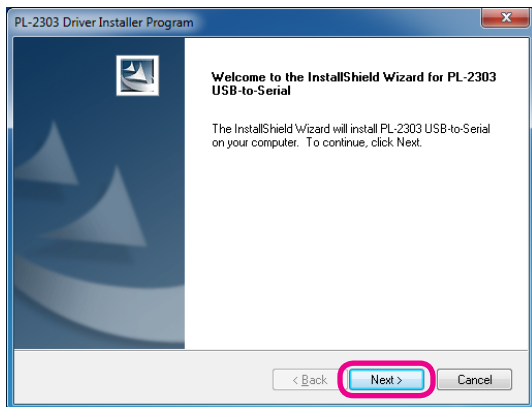


## DRIVER INSTALLATION (FOR WINDOWS® 7)

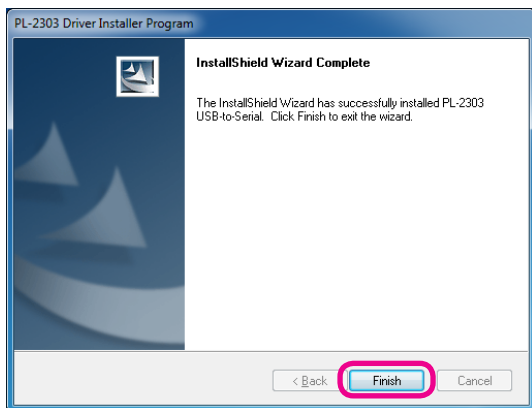
Before installing the driver, make sure that the SCU-19 PC Connection Cable is disconnected from the computer.

### Installation

1. Start up the computer as an “Administrator” user.
2. Double check and ensure the SCU-19 PC Connection Cable is *not connected* to the computer.
3. Unzip the downloaded (SCU-19\_PC\_Connection\_Cable\_Driver.zip) file.
4. Double click the left mouse button on [PL2303\_Prolific\_DriverInstaller\_v1.8.0.exe].
5. When the [User Account Control] dialog box opens, click the left mouse button on [Yes].
6. The dialog box, which is shown below, will open. Click the left mouse button on [Next], to initiate the installation of the driver.
8. Connect the SCU-19 PC Connection Cable to the USB jack on the computer. The SCU-19 PC Connection Cable will be recognized automatically.

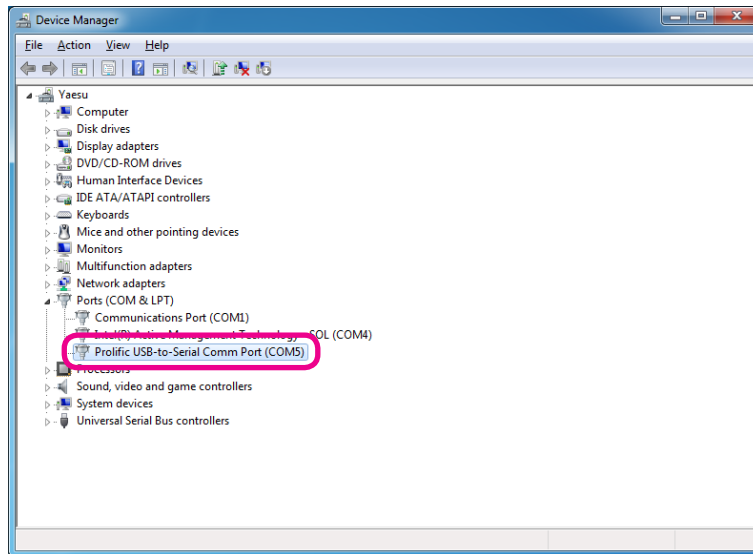


7. When the installation is finished, the dialog box shown below will open. Click the left mouse button on [Finish], to complete the installation of the driver.



## Confirmation

1. Click the left mouse button on the [Start] button in the tool bar, then click the right mouse button on the [Computer].
2. Click the left mouse button on the [Property], then click the left mouse button on [Device Manager].
3. When the [User Account Control] dialog box opens, click the left mouse button on [Yes].
4. Open the [Device Manager] dialog box, then double click the left mouse button on [Ports (COM&LPT)].
5. When the “Prolific USB-to-Serial Comm Port (COM X)” (X: Comm Port Number) is displayed, the SCU-19 PC Connection Cable is functioning normally.

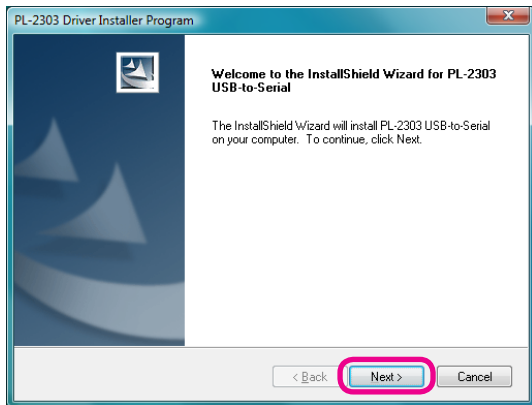


## DRIVER INSTALLATION (FOR WINDOWS® VISTA®)

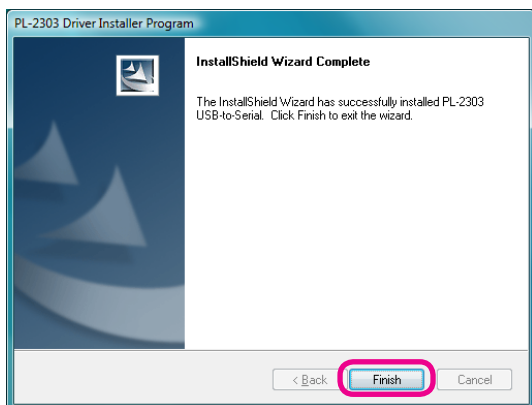
Before installing the driver, make sure that the SCU-19 PC Connection Cable is disconnected from the computer.

### Installation

1. Start up the computer as an “Administrator” user.
2. Double check and ensure the SCU-19 PC Connection Cable is *not connected* to the computer.
3. Unzip the downloaded (SCU-19\_PC\_Connection\_Cable\_Driver.zip) file.
4. Double click the left mouse button on [PL2303\_Prolific\_DriverInstaller\_v1.8.0.exe].
5. When the [User Account Control] dialog box opens, click the left mouse button on [Allow].
6. The dialog box, which is shown below, will open. Click the left mouse button on [Next], to initiate the installation of the driver.
8. Connect the SCU-19 PC Connection Cable to the USB jack on the computer. The SCU-19 PC Connection Cable will be recognized automatically.

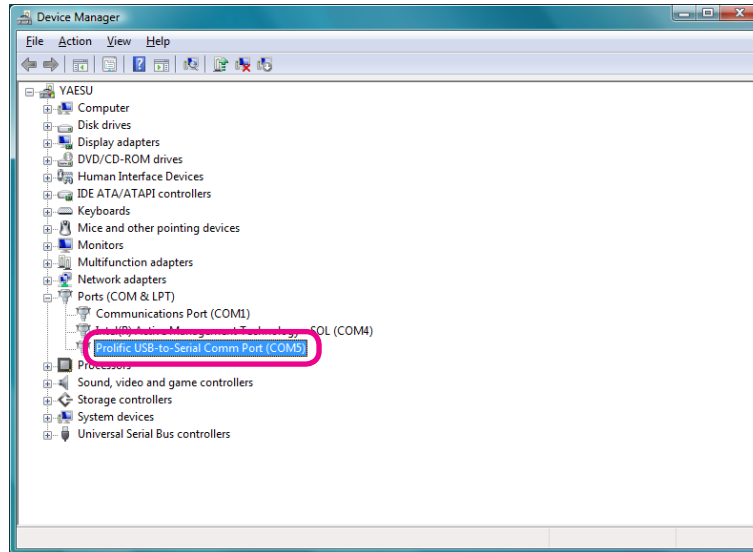


7. When the installation is finished, the dialog box shown below will open. Click the left mouse button on [Finish], to complete the installation of the driver.



## Confirmation

1. Click the left mouse button on the [Start] button in the tool bar, then click the right mouse button on the [Computer].
2. Click the left mouse button on [Property], then click the left mouse button on [Device Manager].
3. When the [User Account Control] dialog box opens, click the left mouse button on [Yes].
4. Click the left mouse button on [Device Manager], to open the [Device Manager] dialog box, then double click the left mouse button on [Ports (COM&LPT)].
5. When the “Prolific USB-to-Serial Comm Port (COM X)” (X: Comm Port Number) is displayed, the SCU-19 PC Connection Cable is functioning normally.

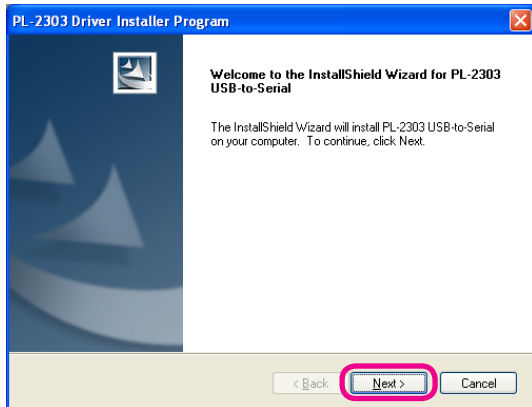


## DRIVER INSTALLATION (FOR WINDOWS® XP)

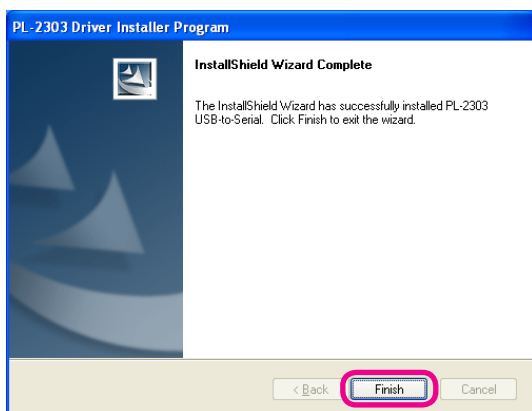
Before installing the driver, make sure that the SCU-19 PC Connection Cable is disconnected from the computer.

### Installation

1. Start up the computer as an “Administrator” user.
2. Double check and ensure the SCU-19 PC Connection Cable is *not connected* to the computer.
3. Unzip the downloaded (SCU-19\_PC\_Connection\_Cable\_Driver.zip) file.
4. Double click the left mouse button on [PL2303\_Prolific\_DriverInstaller\_v1.8.0.exe].
5. The dialog box, which is shown below, will open. Click the left mouse button on [Next], to initiate the installation of the driver.
7. Connect the SCU-19 PC Connection Cable to the USB jack on the computer. The SCU-19 PC Connection Cable will be recognized automatically.



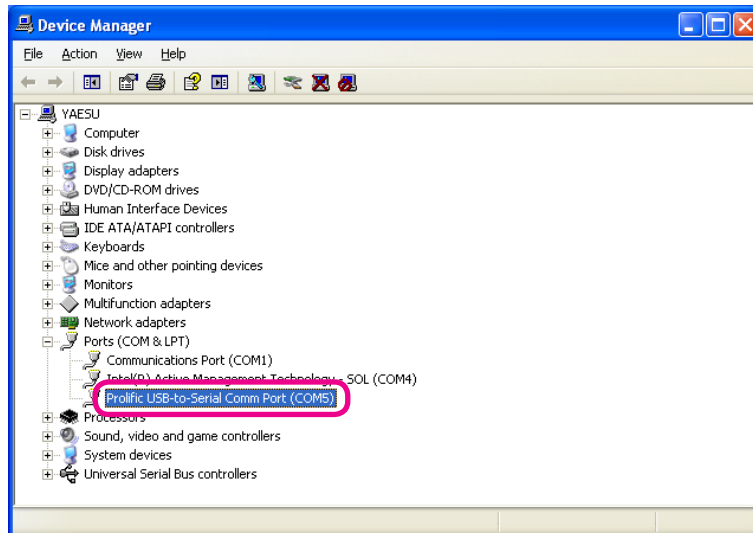
6. When the installation is finished, the dialog box shown below will open. Click the left mouse button on [Finish].





## Confirmation

1. Click the left mouse button on the [Start] button in the tool bar, then click the right mouse button on the [My Computer].
2. Click the left mouse button on [Properties], to open the [System Property] dialog box. Click the left mouse button on the [Hardware] tab, and then click the left mouse button on the [Device Manager] box to open the [Device Manager] dialog box.
3. Double click the left mouse button on [Ports (COM&LPT)].
4. When the “Prolific USB-to-Serial Comm Port (COM X)” (X: Comm Port Number) is displayed, the SCU-19 PC Connection Cable is functioning normally.



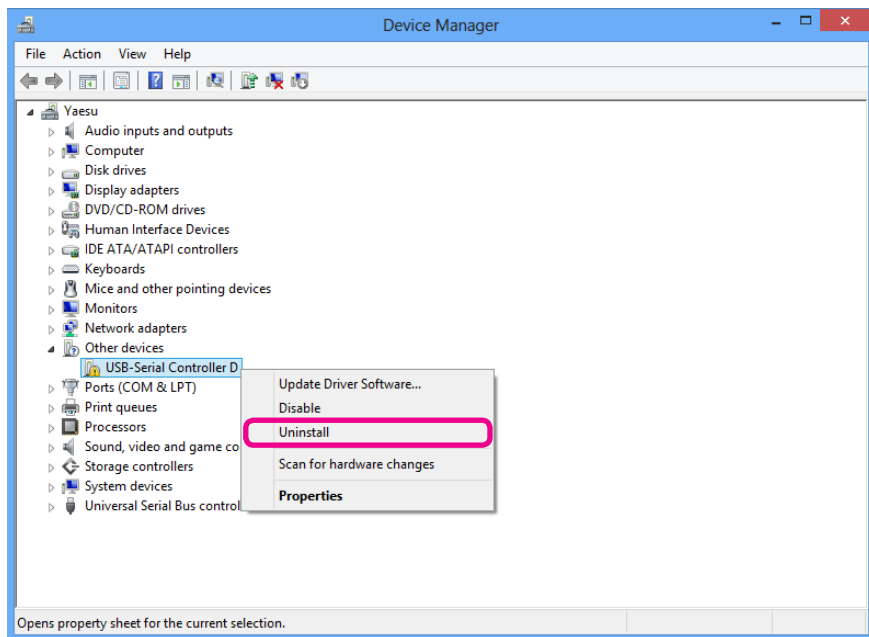
## When the Driver Installation Fails

The driver installation may fail when:

- The installation wizard is canceled during the installation.
- The SCU-19 PC Connection Cable is connected to the computer before installing the driver.

When the installation of the driver fails:

1. Open the [Device Manager] dialog box, as described in the “Confirmation” instruction section of each Operating System.
2. Click the left mouse button on the “device” which is appended to the “!” or “?” icon, then click the right mouse button on [Uninstall], to uninstall the driver.
3. Retry the installation of the driver.



## How to Uninstall the PC-Connection Cable Driver

If you wish to uninstall the SCU-19 PC Connection Cable driver, perform the following procedures (The illustration is a Windows® 8 screen):

1. Disconnect the SCU-19 PC Connection Cable from the computer.
2. Click the left mouse button in one of the sequences shown below:

Windows® 8:

Charm bar → [Settings] →  
→ [Control Panel] →  
→ [Uninstall a program]

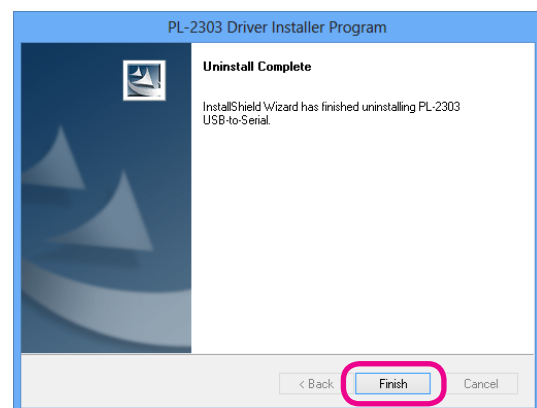
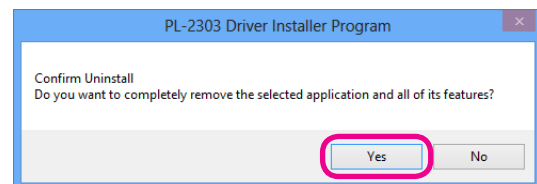
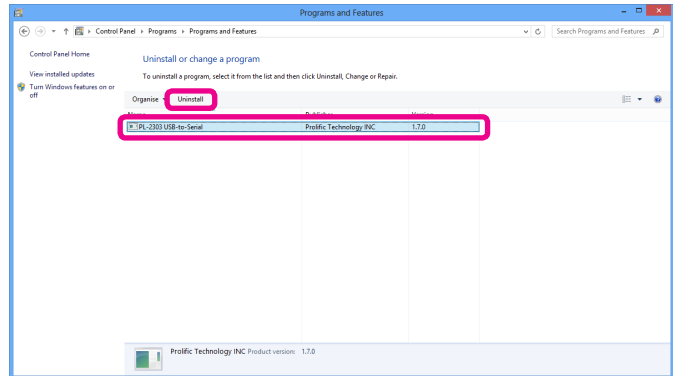
Windows® 7 and Windows® Vista®:

[Start] → [Control Panel] →  
→ [Uninstall a program]

Windows® XP:

[Start] → [Control Panel] →  
→ [Add or Remove Programs]

3. The dialog box shown to the right will open. Click the left mouse button on “PL-2303 USB-to-Serial”, then click the left mouse button on [Uninstall].
4. The dialog box shown to the right will open. Click the left mouse button on [Yes] to uninstall the SCU-19 PC Connection Cable driver.
5. When uninstall is finished, the dialog box shown to the right will open. Click the left mouse button on [Finish] to complete the removal of the SCU-19 PC Connection Cable driver.



# ***YAESU***

---

***The radio***

**YAESU MUSEN CO., LTD.**

Tennozu Parkside Building  
2-5-8 Higashi-Shinagawa, Shinagawa-ku, Tokyo 140-0002 Japan

**YAESU USA**

6125 Phyllis Drive, Cypress, CA 90630, U.S.A.

**YAESU UK**

Unit 12, Sun Valley Business Park, Winnall Close  
Winchester, Hampshire, SO23 0LB, U.K.

**YAESU HK**

Unit 2002, 20/F, 9 Chong Yip Street,  
Kwun Tong, Kowloon, Hong Kong

Copyright 2013

YAESU MUSEN CO., LTD.

All rights reserved.

No portion of this manual  
may be reproduced  
without the permission of  
YAESU MUSEN CO., LTD.